

**SUFFOLK COUNTY SEWER DISTRICT 13—WINDWATCH
STP EXPANSION
TOWN OF ISLIP, NY
SUFFOLK COUNTY DEPARTMENT OF PUBLIC WORKS**

**ENGINEERING
SURVEYING
PLANNING
ENVIRONMENTAL**

**FEASIBILITY & DUE
DILIGENCE ASSISTANCE
LAND & SITE PLANNING
SURVEYING & MAPPING
CIVIL ENGINEERING
TRAFFIC & HIGHWAY
ENGINEERING
SANITARY ENGINEERING
RECREATIONAL FACILITY
PLANNING & DESIGN
MARINE & WATERFRONT
ENGINEERING
STRUCTURAL DESIGN &
ENGINEERING
STORMWATER
MANAGEMENT PLANNING
PERMITTING & PROCESSING
ENVIRONMENTAL
CONSULTING
SERVICES DURING
CONSTRUCTION**

**MEETING THE NEEDS OF OUR
CLIENTS SINCE 1954**

NELSON & POPE

572 Walt Whitman Road
Melville, New York
11747

PHONE: 631-427-5665
FAX: 631-427-5620
NP@NELSONPOPE.COM

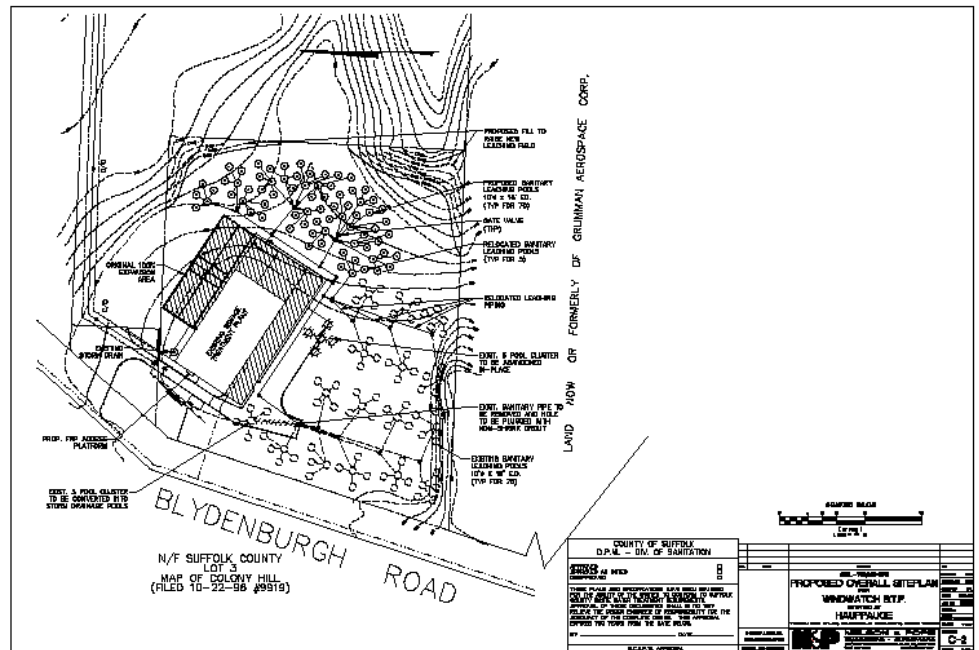
PROJECT TYPE: STP EXPANSION PROJECT
PROJECT SCOPE: 250,000 GPD EXPANSION OF SCSD #13—WINDWATCH TO
ACCOMMODATE ADDITIONAL CONNECTIONS
CONSTRUCTION COST: \$13.8M EST.

DESIGN TEAM:

NELSON & POPE: SEWAGE TREATMENT PLANT EXPANSION PLANS AND
SPECIFICATIONS, CONSTRUCTION OBSERVATION, RECORD DRAWINGS AND
OPERATIONS AND MAINTENANCE MANUAL UPDATES

RELEVANT COMPONENTS:

- CONSTRUCTION PLANS DEVELOPMENT
- CONSTRUCTION SPECIFICATIONS DEVELOPMENT
- EFI DEVELOPMENT
- CONSTRUCTION OBSERVATION
- PLANT OPERATION CERTIFICATION
- O&M MANUAL DEVELOPMENT
- RECORD DRAWING DEVELOPMENT
- COST ESTIMATE



USING APPROVED STP ENGINEERING REPORT, PREPARED STP EXPANSION PLANS AND SPECIFICATIONS FOR SCDPW APPROVAL. PREPARED BID ANALYSIS FOR CONSORTIUM APPROVAL. ISSUED ENGINEERS FIELD INSTRUCTIONS TO ADDRESS CONSTRUCTION RELATED REQUESTS FOR INFORMATION. PREPARED RECORD DRAWINGS TO REFLECT MODIFICATIONS AT THE STP. PREPARED A REVISED OPERATIONS AND MAINTENANCE MANUAL TO REFLECT PROCESS MODIFICATIONS MADE DURING CONSTRUCTION.

